

GOWEN CONTEMPORARY

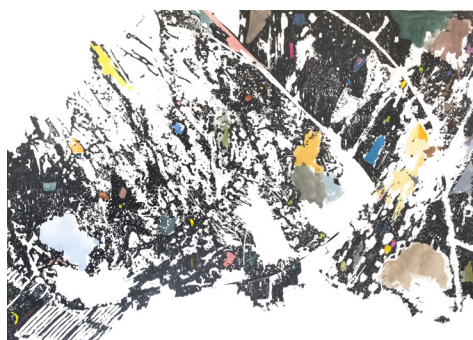
GENEVA Switzerland

ART PARIS ART FAIR 2018, 5 - 8 April - Booth C13 Switzerland Guest of Honour

Pascal Berthoud, Tami Ichino and Marie Velardi

Opening : Wednesday 4 April, 6pm–10pm (by invitation only)

Thursday 5 April, 11.30am - 8pm; Friday 6 April, 11.30am – 9pm; Saturday 7 April, 11.30am – 8pm; Sunday 8 April, 11.30am – 7pm



Pascal Berthoud
Les mondes étendus II, 2017
Gray pencil and watercolor on paper
75 x 105 cm

Pascal BERTHOUD (Switzerland, 1971)

For Art Paris Art Fair 2018, the artist presents two significant drawings, questioning the notions of mouvement, space, memory and disappearance : « Burning Snow » and « Les mondes étendus ». Between abstraction and figuration, between reverie and reality, the work of Pascal Berthoud, composed mainly of drawings and sculptures, is organized in thematic series. His drawings feed on history of art and architecture, on cinema and literature, but also on science and geology. These different sources are explored, assembled and disintegrated in the matter of the drawing composed by sharp lines and whose transparency is brought by white and watercolored areas. Matter is deconstructed and leads to a « morphogenesis », rich of conceptual, emotional and metaphorical interactions.

Pascal Berthoud lives and works in Geneva. **Selected solo exhibitions:** Galerie Elizabeth Couturier, Lyon, FR (2018, 2016, 2015); Gourvenec Ogor, Marseille, FR (2016); Galerie Analix Forever, Geneva, CH (2016); Musée de la Chartreuse, Douai, FR (2015); Salon international du dessin contemporain, Château de Servière avec Analix Forever, Marseille FR (2014). **Selected group exhibitions:** Galerie Espace A Vendre, Nice, FR (2017-2018); Gowen Contemporary, Geneva, CH (2017); Metro Pictures Gallery, New York, USA (2017); Galerie Heinzer Reszler, Lausanne, CH (2017); Galerie White Project, Paris FR (2016); DDessin, Ateliers Richelieu, Paris, FR (2016); GIAF, Changwon Exhibition Convention Center, Changwon, KR (2016); Centre d'art contemporain de Genève, CH (2013).

Tami ICHINO (Japan, 1978)

The work of Tami Ichino designates with lightness elements of an invisible reality and brings us back, through the exercise of metaphor, to her personal semantic universe, often deeply marked by her Japanese origins.

Whether it is urban furniture, starry skies, incongruous and decontextualized objects, climbing plants or roots, her work inhabited by a surreal atmosphere invites us to look up, creating a back and forth and tilting the point of view. Beyond the apparent simplicity of her compositions and the minimalism in the choice of primary colors, the artist manages to sublimate her object and reveal its poetic and metaphorical character through a resolutely sophisticated technique.



Tami Ichino
Vue vers le haut (Appui), 2018
Acrylic on canvas
180 x 130 cm

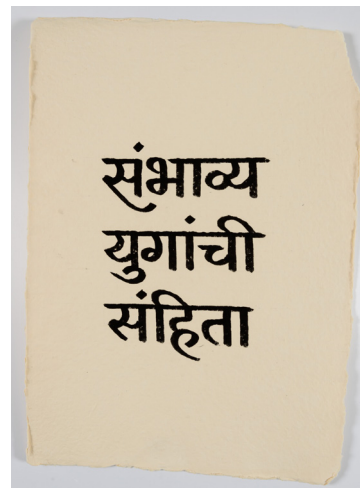
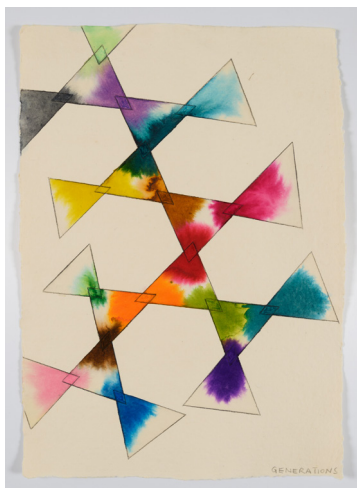
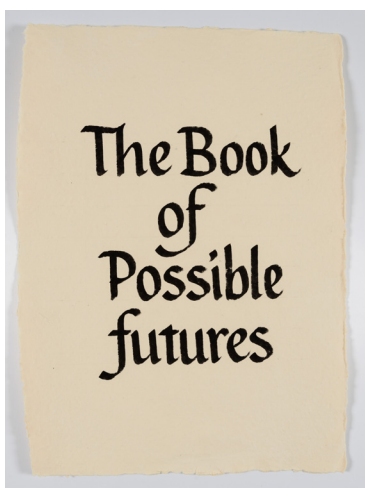
Tami Ichino was born in 1978 in Fukuoka (Japan), she lives and works in Geneva. **Selected solo exhibitions:** Gowen Contemporary, Geneva, CH (September 2018); Espace Kugler, Geneva, CH 2012; Palais de l'Athénée, Salle Cornier, Geneva, CH (2012); Halle Nord, Geneva, CH (2010); Galerie Faye Fleming & Partner (today Gowen Contemporary), Genève, CH (2009). **Selected group exhibitions:** Villa Dutoit, Geneva, CH (2017); Château de Vuillerens, Curated by Karine Tissot, CH (2017); Gowen Contemporary, Geneva, CH (2017); Galerie Forma, Lausanne, CH (2016); Studio Sandra Recio, Geneva, CH (2015); Fondation Alice Bailly, CHUV, Lausanne, CH (2015); Centre d'art d'Yverdon-les-Bains, CH (2015); Ferme de la Chapelle, Grand-Lancy, CH (2014); Hackney Wick Group Show, London, GB (2014); Espace Topographie de l'Art, Paris, FR (2014); Kunsthaus, Langenthal, CH (2009).

GOWEN CONTEMPORARY

GENEVA Switzerland

Marie VELARDI (Switzerland, 1977)

Marie Velardi is inhabited by the perception of the immensity of time and seeks to represent a calendar that can pass from day-time to life-time and to the life of the universe, showing the transition from short to long term. Thus, she projects herself into an immensely distant future to imagine the past or vice-versa. Her distanced worldview paves the way for a new consciousness. Relying on strong historical and scientific research, linking aesthetics to ethics, Marie Velardi creates works between observation and warning, where water is both the recurrent theme and the essential element in the creative process. The exhibition presents her latest work, *The Book of Possible Futures*, 2016, an imaginary book inspired by the Mumbai's "Sparrow Archive-Sound and Picture Archives for Research on Women", which deal with the ethical and cultural issues of Indian women and their future hopes. This work is exhibited exclusively and in its entirety at Art Paris Art Fair 2018. The set, composed of 49 works on Indian handmade paper, attempts to represent the time in a disorienting multi-directional way through colors and shapes: the Temporal Maps, 17 watercolor drawings, alternated by short calligraphy texts in English and translated into Marathi.



Marie Velardi
Calligraphies and Temporal Map, from The Book of Possible Futures, 2016
Ink and watercolor on Indian handmade paper
43 x 32 cm (each paper)

Marie Velardi was born in 1977 in Geneva, where she lives and works. **Selected solo exhibitions:** Dr. Bhau Daji Lad Museum, Mumbai, IN (2016-2017); Peacock Visual Arts, Aberdeen, UK (2016); Gowen Contemporary, Geneva, CH (2014); Fondation Suisse, Pavillon Le Corbusier, Paris, FR (2014); Villa du Parc, Centre d'Art Contemporain, Annemasse, FR (2013); Palais de l'Athénée, Geneva, CH (2007). **Selected group exhibitions:** Off Biennale, Cairo, EG (2018, upcoming); Centre d'Art Contemporain, Parc Saint Léger, Pougues-Les-Eaux, FR (2017); Musée d'Art du Valais, Sion, CH (2017); SAKSHI Gallery, Mumbai, IN (2017); Musée d'Art Contemporain, Les Abattoirs, Toulouse, FR (2016); Musée Rath, Geneva, CH (2016); Kochi-Muziris Biennale, Kochi, IN (2014-2015); Musée des Arts Contemporains, Site du Grand Hornu, BE (2012).